



# SAFETY ON THE GO

# PRIME MOBILE

A personal mobile SOS call pendant with 2-way voice & GPS



No Contracts  
No Installation  
100% Canadian

**Additional PRIME Mobile features:**

- ✓ Up to 1 minute location updates
- ✓ Request on-demand current/last position
- ✓ Log in from any web-enabled smart phone
- ✓ Sends E-mail and SMS notifications
- ✓ Equipped with break-away lanyard

Compare for yourself...

	PRIME Mobile <sup>1</sup>	Philips Lifeline
Calls from anywhere in Canada (no land line or Internet required)	✓	✗
Calls for help at the push of a button	✓	✓
2-way voice integrated pendant	✓	✗
Allows you to define electronic safe zones	✓	✗
Helps locate and monitor a wandering or lost user	✓	✗

<sup>1</sup>Under adequate cellular/GPS coverage

## Designed Exclusively For:

-  Health Care
-  Persons at Risk
-  Mobile Professionals



2.75" / 7 cm high and weighs 4 oz.



**SafeTracks**  
GPS Canada Inc.

Mobile monitoring, locating, and emergency response solutions to help keep people safe.

Phone: 1.877.761.4477  
[www.safetracksgps.ca](http://www.safetracksgps.ca)

ORDER NOW AT [www.safetracksgps.ca](http://www.safetracksgps.ca)

No fuss.  
All in one  
box and  
ready 2 go!



## What's in the box?

1. One Break-Away Lanyard
2. One PRIME Mobile
3. One USB PRIME Charger

ORDER NOW AT [www.safetracksgps.ca](http://www.safetracksgps.ca)

# Go

Works anywhere inside or outdoors, across the street or across Canada.<sup>1</sup>



#### GSM MOBILE FEATURE:

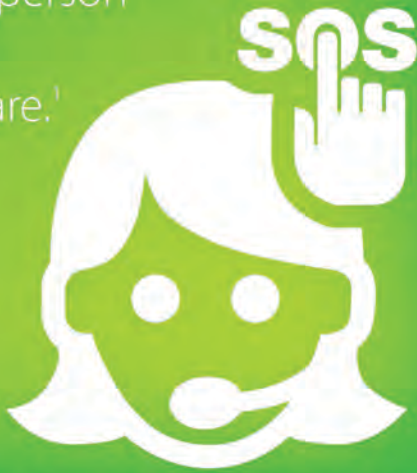
Added safety and security 24/7 with the ability to call for help anytime whether you are at home or out on the go.



Enjoy peace of mind because **you can call from anywhere, anytime.**

# Call

Speak to a live person to ask for help wherever you are.<sup>1</sup>



#### DIRECT DIAL FEATURE:

Emergency response can be dialed at the push of a single SOS button and specified contacts can be notified via SMS and/or email.



Talk hands-free to emergency response **with the integrated microphone & speaker.**

# Find

Help can locate you if you are lost or need assistance.<sup>1</sup>



#### GPS LOCATOR FEATURE:

For active seniors, work alone or traveling professionals, victims of violence and those who need to call for help and/or need to be located.



Integrated GPS helps emergency response **or specified contacts find you when you call.**

<sup>1</sup>Under adequate cellular/GPS coverage.

Also from SafeTracks GPS...



## SAFETY ON THE GO GPS SMART SOLE

An easy-to-use shoe sole with integrated GPS to locate mobile or missing persons

**Designed to assist those with:**

- Alzheimer's or Dementia
- Cognitive Disabilities
- Wandering Tendencies

Learn more at: [www.safetracksgps.ca](http://www.safetracksgps.ca)